

PRODUCT INFORMATION PACKET

Model No: 5KH35JN3132T

Catalog No: 4682

Fan and Blower Motor, 0.33 HP, 1 Ph, 60 Hz, 115/208-230 V, 1800 RPM, 56Z Frame, DP



Regal and Marathon are trademarks of Regal Rexnord Corporation or one of its affiliated companies.

©2023 Regal Rexnord Corporation, All Rights Reserved. MC017097E

Nameplate Specifications

Output HP	0.33 Hp	Output KW	0.25 kW
Frequency	60 Hz	Voltage	115/208-230 V
Current	6.2,3.1 A	Speed	1725 rpm
Service Factor	1.35	Phase	1
Efficiency	59.2 %	Power Factor	0
Duty	Continuous	Insulation Class	B
KVA Code	R	Frame	56Z
Enclosure	Drip Proof	Thermal Protection	Automatic
Ambient Temperature	40 °C	Drive End Bearing Size	6203
Opp Drive End Bearing Size	6203	UL	Recognized
CSA	Yes	CE	N
Number of Speeds	1		

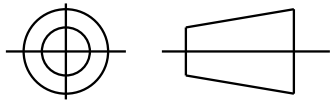
Technical Specifications

Electrical Type	Split Phase	Starting Method	SM
Poles	4	Rotation	Counterclockwise/Clockwise
Mounting	Resilient Base	Motor Orientation	ANY
Drive End Bearing	BALL	Opp Drive End Bearing	BALL
Frame Material	Rolled Steel	Overall Length	10.3 in
Frame Length	5.79 in	Shaft Diameter	0.500 in
Shaft Extension	2.25 in	Thru-bolts Extension	0 in
Connection Drawing	52A105383AA	Outline Drawing	52A106925P1

This is an uncontrolled document once printed or downloaded and is subject to change without notice. Date Created:03/15/2023

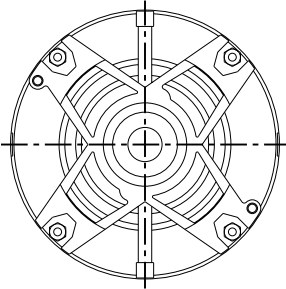
SHEET 1
 REV 4
 SIZE 52A106925
 DRAWING NO. A

THIRD ANGLE PROJECTION



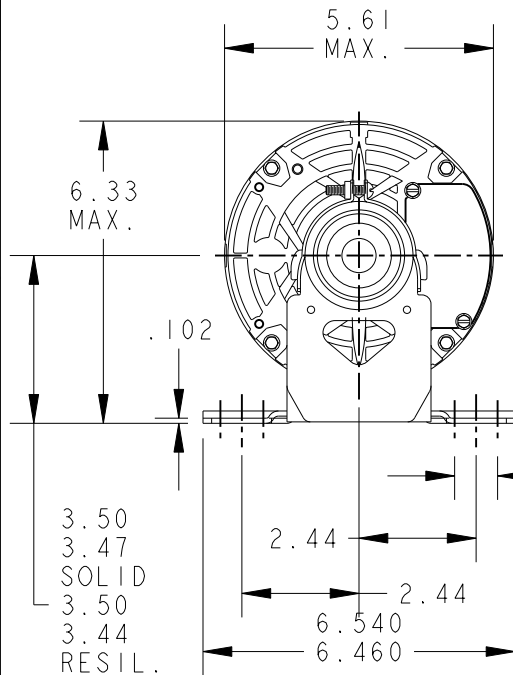
REVISIONS

REV.	DESCRIPTION	DATE	APPROVED
3	REDRAWN BY 2M SOFTWARE CO.	02/09/95	CCP
4	CHG TO RBC FORMAT PER ISO5-1777	02/14/06	DURGA

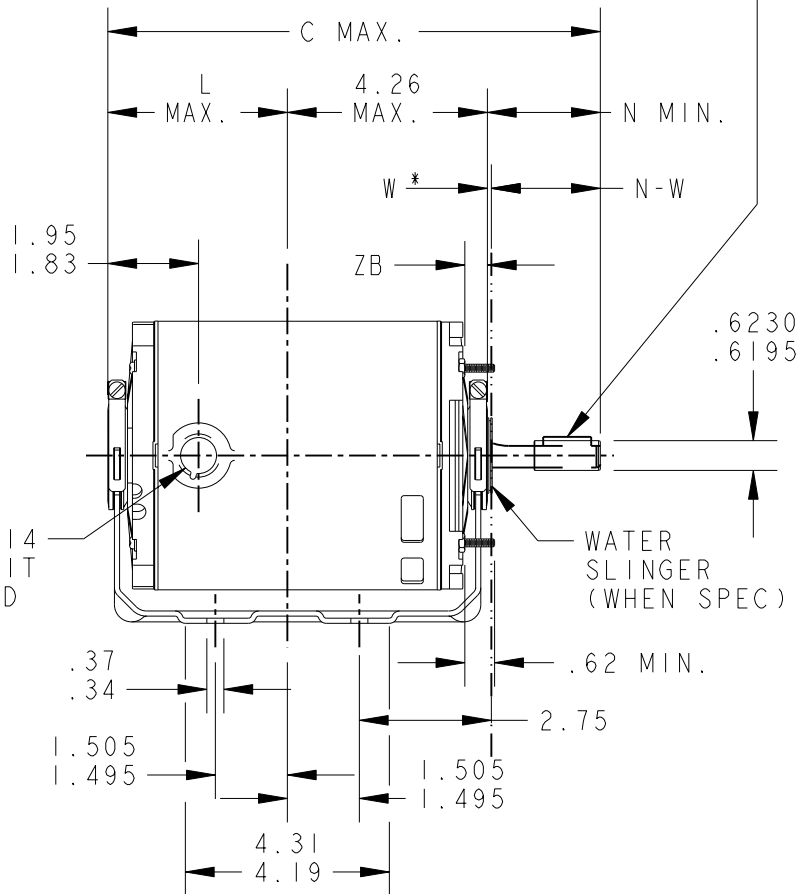


VIEW SHOWING P.E. VENTILATION OPENINGS

.188 X .188 X 1.00 LG. KEY



.500-14 CONDUIT THREAD



WATER SLINGER (WHEN SPEC)

W * IS A CLEARANCE DUE TO VARIATION IN PARTS AND ASSEMBLY.

I	KH	35	56Z	10.26	3.80	2.25	2.38/2.16	.55/.52
P	TYPE	GE SIZE	NEMA FR	C	L	N	N-W	ZB

SIGNATURES		DATE
MODEL	R.L.BONTA	03/17/89
DETAIL	.	.
CHECKED	.	.
ENGRG	.	.
MFG	.	.
FOR ADDITIONAL INFO REFER TO:	QUALITY	.
APPLIED PRACTICES	ISSUED	C.C.P. 02/09/95
DIMENSIONS ARE IN INCHES ✓	SOLID MODEL: 52A106925	

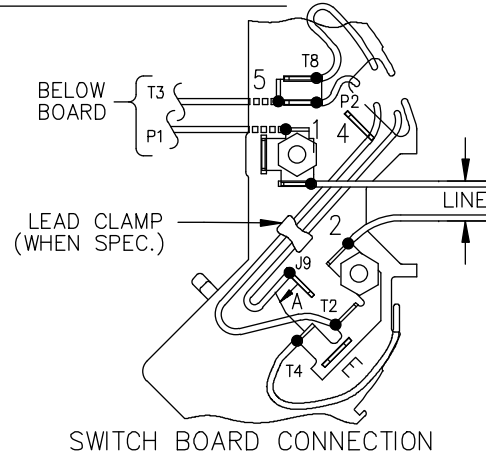


REGAL-BELOIT CORPORATION

TITLE	
OUTLINE	
FORM N - GENERAL PURPOSE MOTOR - DRIP PROOF	
SOLID OR RESIL BASE - BALL OR SLEEVE BEARING-FMF: 5KH35JN3132T	
SIZE	DRAWING
A	52A106925
SCALE: 1.000	REF. No: .
SHEET 1 of 1	

REV 4

EITHER ROTATION, DUAL VOLTAGE, TYPE KC OR KH, WITH THERMAL PROTECTION



NOTE #1 - START CAP & J9 WHEN SPECIFIED (*). IF NO CAPACITOR (KH), CONNECT T5 DIRECTLY TO SWITCH (A). WHEN MORE THAN ONE CAPACITOR IS USED, CONNECT IN PARALLEL.

NOTE #2 - TO REVERSE ROTATION, INTER CHANGE RD(T8) AND BLK(J9-KC OR T5-KH) LEADS.

SWITCH REF. - 115D958AB	CONNECTION LABEL	CCW ROTATION: NP52X332051AA
		CW ROTATION: NP52X332051AC

NO.	REVISION	BY & DATE	CHK	TOLERANCES UNLESS SPECIFIED		FINISH	DRAWN M.D.P 06/29/87		
				DEC.	INCHES				
				.X	±0.1	REGAL-BELOIT CORPORATION TITLE CONNECTION DIAGRAM 30 FRAME SWITCH REDESIGN	CHK		
				.XX	±0.02		APPD M.D.P 03/26/96		
5	ADDED CONNECTION LABEL PER ECO-0030779	UD 02/06/13	PKG	.XXX	±0.005	MAT'L.	SCALE 1=1		
4	UPDATED PER ISO7-0150	MD 01/23/07		.XXXX	±0.0005		REF		
				ANG	±1.0	PREV			
THIS DRAWING IN DESIGN AND DETAIL IS OUR PROPERTY AND MUST NOT BE USED EXCEPT IN CONNECTION WITH OUR WORK. ALL RIGHTS OF DESIGN AND INVENTION ARE RESERVED. THIS IS AN ELECTRONICALLY GENERATED DOCUMENT - DO NOT SCALE THIS PRINT				RFP	CAD FILE	52A105383AA	SIZE A	DRAWING NO. 52A105383AA	REV. 5
				DIST					